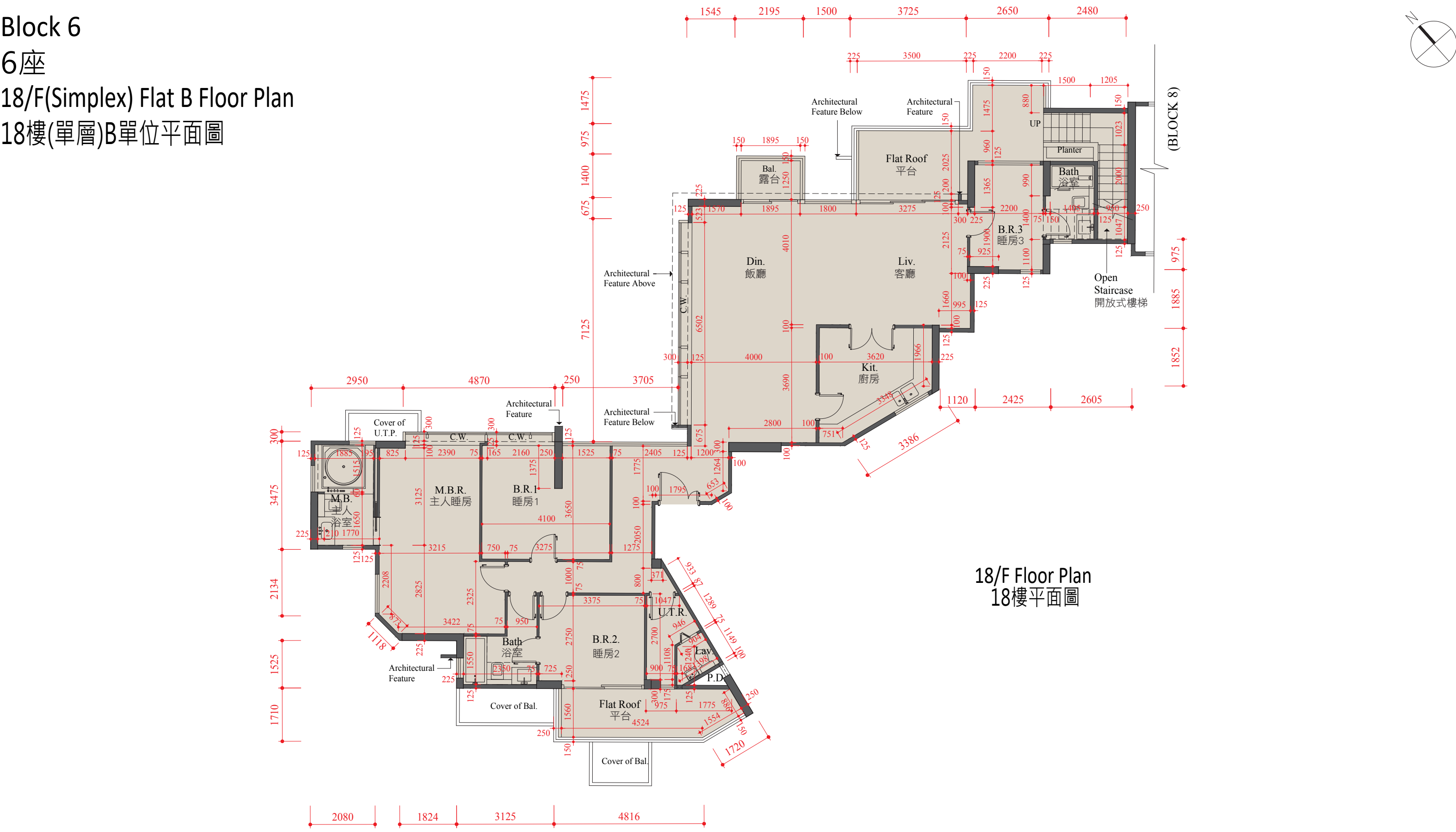
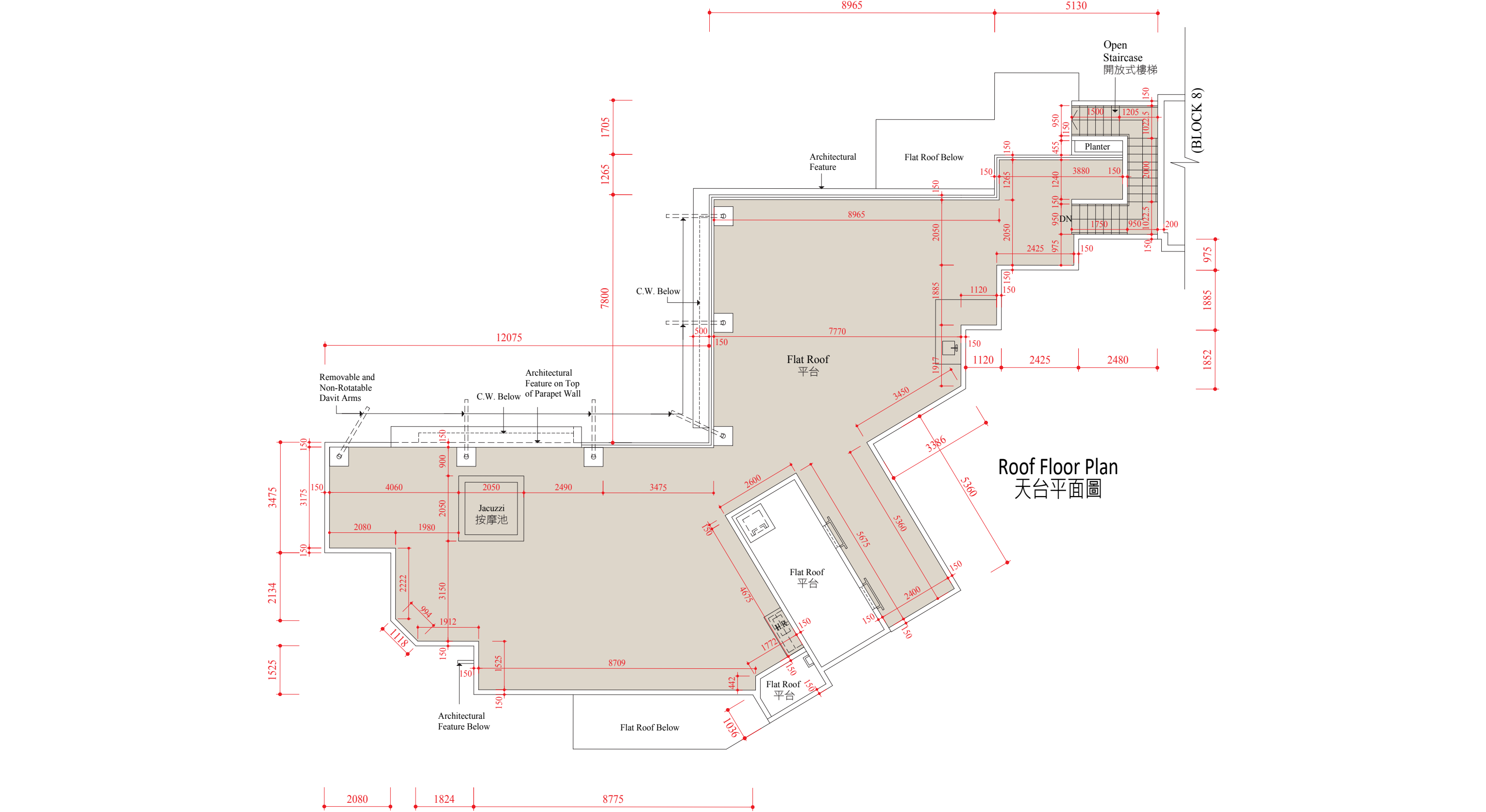


Block 6  
6座  
18/F(Simplex) Flat B Floor Plan  
18樓(單層)B單位平面圖



Floor-to-Floor Height (mm) : 3450  
層與層之間的高度 (毫米)

SCALE: 0M/米  
比例: 1:50



Floor-to-Floor Height (mm) : Not Applicable  
層與層之間的高度 (毫米) : 不適用

SCALE: 0M/米  
比例: 1:50

Legend 圖例:

18/F	= 18/F(Simplex)	= 18樓(單層)	Cover of Bal.	= Cover of Balcony	= 露台上蓋	Liv.	= Living Room	= 客廳
Architectural Feature	= Architectural Feature	= 建築裝飾	Cover of U.T.P.	= Cover of Utility Platform	= 工作平台上蓋	M.B.	= Master Bathroom	= 主人浴室
Architectural Feature Above	= Architectural Feature Above	= 建築裝飾置上	Din.	= Dining Room	= 飯廳	M.B.R.	= Master Bedroom	= 主人睡房
Architectural Feature Below	= Architectural Feature Below	= 建築裝飾置下	DN	= DOWN	= 落	Open Staircase	= Open Staircase	= 開放式樓梯
Architectural Feature on Top of Parapet Wall	= 置於護牆上的建築裝飾	= 建築裝飾置上	Flat Roof	= Flat Roof	= 平台	P.D.	= Pipe Duct	= 管槽
B.R.	= Bedroom	= 睡房	Flat Roof Below	= Flat Roof Below	= 平台置下	Planter	= Planter	= 花槽
Bal.	= Balcony	= 露台	H.R.	= Hose Reel	= 喉箍	Removable and Non-Rotatable Davit Arms	= 可拆除及不可轉動之吊臂	= 多用途房
Bath	= Bathroom	= 浴室	Jacuzzi	= Jacuzzi	= 按摩池	U.T.R.	= Utility Room	= 洗衣房
C.W.	= Curtain Wall	= 幕牆	Kit.	= Kitchen	= 廚房	UP	= UP	= 上
C.W. Below	= Curtain Wall Below	= 幕牆置下	Lav.	= Lavatory	= 廁所			

The internal areas of the residential properties on the upper floors will generally be slightly larger than those on the lower floors because of the reducing thickness of the structural walls on the upper floors.

因住宅物業的較高樓層結構牆的厚度遞減，較高樓層的內部面積，一般比較低樓層的內部面積稍大。

Notes:

- There may be architectural features and/or exposed pipes on external walls and/or windows of some of the floors. For details, please refer to the latest approved building plans.
- Common drainage pipes enclosed in cladding are located adjacent to balcony and/or utility platform of some residential units. For residential units with flat roof and/or roof, common drainage pipes will run through the flat roof and/or roof.
- The condensers of the split-type air-conditioners are installed on A/C platforms / A/C plant room / flat roofs (where applicable).
- There are ceiling bulkheads in living/dining rooms, bedrooms, utility rooms, corridors and/or kitchens of some residential units for the air-conditioning system and/or M&E services.
- The internal ceiling height within residential units may vary due to structural, architectural and/or decoration design variations.
- Some louvers that are installed at false ceilings may not be indicated on the floor plans.
- Balcony and utility platform are non-enclosed areas.
- Symbols of fittings and fitments such as bathtub, sink, water closet, shower, sink counter, etc. are prepared based on the latest approved building plans and are for general indication only.
- Floor-to-floor height of residential property refers to the height between the top surface of structural slab of a floor and the top surface of the structural slab of its immediate upper floor.
- The thickness of floor slabs (excluding plaster) of the residential property is 200 mm.
- The dimensions in the floor plan are all structural dimensions in millimeter.
- The floor plan is for reference only. Please refer to the Sales Brochure for details.

備註:

- 部份樓層外牆及/或窗戶設有建築裝飾及/或外露喉管，詳細資料請參考最新批准的建築圖則。
- 部份住宅單位的露台及/或工作平台側之外牆裝飾板內設有公用喉管。公用喉管亦安裝於部份連平台及/或天台住宅單位的平台及/或天台內。
- 分體式冷氣機的冷凝器設於冷氣機平台/冷氣機房/平台(如適用)。
- 部份住宅單位客/飯廳、睡房、多用途房、走廊及/或廚房的裝飾橫樑裝置冷氣喉管及/或其他機電設備。
- 住宅單位的天花高度將會因應其結構、建築設計及/或裝修設計上的需要而有差異。
- 部份百葉窗安裝於假天花之上且沒有於平面圖顯示。
- 露台及工作平台為不可封閉的地方。
- 樓面平面圖上所顯示的裝置符號，如浴缸、洗滌盆、座廁、花灑、洗滌盆櫃等乃按最新的經批准的建築圖則繪製，只作一般示意用途。
- 住宅物業的層與層之間高度指該樓層之石屎地台面與上一層石屎地台面之高度距離。
- 住宅物業的樓板(不包括灰泥)的厚度為200毫米。
- 平面圖所列之數字為以毫米標示之建築結構尺寸。
- 平面圖僅供參考。詳情請參閱售樓說明書。